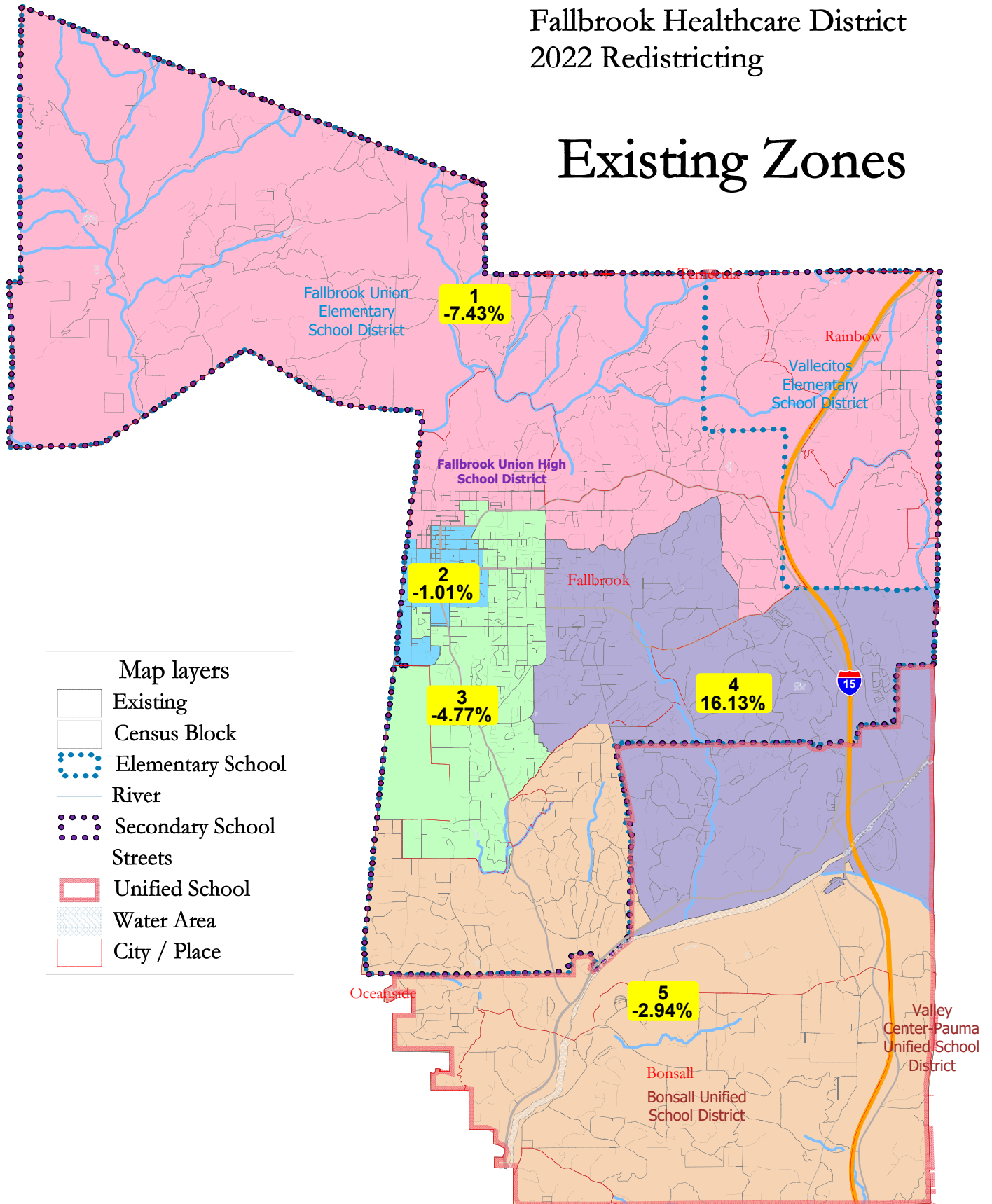


Fallbrook Healthcare District 2022 Redistricting

Existing Zones



Existing Zones Rebuild							
District		1	2	3	4	5	Total
	Total Pop	10,431	11,154	10,731	13,086	10,937	56,339
	Deviation from ideal	-837	-114	-537	1,818	-331	2,655
	% Deviation	-7.43%	-1.01%	-4.77%	16.13%	-2.94%	23.56%
Total Pop	% Hisp	39.6%	73%	41%	22%	20%	39%
	% NH White	51%	20%	50%	65%	69%	51%
	% NH Black	1%	2%	2%	2%	2%	2%
	% Asian-American	4%	2%	4%	7%	6%	5%
Citizen Voting Age Pop	Total	6,805	5,273	7,827	9,124	8,449	37,478
	% Hisp	25%	54%	28%	15%	16%	25%
	% NH White	69%	38%	64%	76%	77%	67%
	% NH Black	2%	5%	2%	2%	2%	2%
	% Asian/Pac.Isl.	3%	2%	5%	7%	5%	5%
Voter Registration (Nov 2020)	Total	6,436	3,831	6,529	9,697	8,085	34,578
	% Latino est.	25%	54%	26%	14%	12%	22%
	% Spanish-Surnamed	23%	49%	23%	13%	11%	20%
	% Asian-Surnamed	1%	1%	1%	2%	2%	2%
	% Filipino-Surnamed	1%	2%	1%	2%	1%	1%
	% NH White est.	72%	44%	73%	81%	83%	74%
	% NH Black	2%	4%	2%	2%	2%	2%
Voter Turnout (Nov 2020)	Total	5,391	2,779	5,493	8,594	7,118	29,375
	% Latino est.	21%	51%	23%	13%	11%	20%
	% Spanish-Surnamed	20%	47%	21%	13%	10%	18%
	% Asian-Surnamed	1%	1%	1%	2%	2%	2%
	% Filipino-Surnamed	1%	1%	1%	1%	1%	1%
	% NH White est.	75%	47%	76%	82%	84%	77%
	% NH Black	2%	4%	2%	2%	2%	2%
Voter Turnout (Nov 2018)	Total	4,120	1,742	4,039	6,137	5,528	21,566
	% Latino est.	17%	43%	17%	10%	9%	15%
	% Spanish-Surnamed	16%	39%	16%	9%	9%	14%
	% Asian-Surnamed	1%	0%	1%	1%	2%	1%
	% Filipino-Surnamed	1%	1%	1%	1%	1%	1%
	% NH White est.	80%	53%	81%	86%	86%	81%
	% NH Black est.	2%	3%	2%	2%	2%	2%
ACS Pop. Est.	Total	9,072	10,596	11,031	11,689	11,152	53,540
Age	age0-19	21%	32%	25%	20%	24%	24%
	age20-60	48%	55%	49%	45%	45%	48%
	age60plus	32%	13%	26%	35%	31%	28%
Immigration	immigrants	17%	28%	23%	15%	17%	20%
	naturalized	58%	44%	47%	67%	71%	55%
Language spoken at home	english	75%	43%	69%	79%	84%	70%
	spanish	20%	55%	28%	14%	11%	25%
	asian-lang	2%	0%	1%	3%	3%	2%
	other lang	3%	1%	2%	4%	2%	2%
Language Fluency	Speaks Eng. "Less than Very Well"	8%	27%	9%	7%	4%	11%
Education (among those age 25+)	hs-grad	48%	48%	50%	42%	39%	45%
	bachelor	19%	12%	20%	23%	27%	21%
	graduatedegree	11%	2%	8%	17%	17%	12%
Child in Household	child-under18	26%	44%	33%	25%	31%	31%
Pct of Pop. Age 16+	employed	55%	64%	57%	57%	55%	58%
Household Income	income 0-25k	15%	19%	14%	10%	10%	13%
	income 25-50k	21%	32%	22%	12%	13%	20%
	income 50-75k	17%	21%	20%	15%	13%	17%
	income 75-200k	39%	27%	39%	49%	45%	41%
	income 200k-plus	8%	1%	5%	14%	19%	10%
Housing Stats	single family	88%	46%	80%	98%	93%	83%
	multi-family	12%	54%	20%	2%	7%	17%
	rented	29%	65%	32%	17%	23%	32%
	owned	71%	35%	68%	83%	77%	68%
Total population data from the 2020 Decennial Census.							
Surname-based Voter Registration and Turnout data from the California Statewide Database.							
Latino voter registration and turnout data are Spanish-surname counts adjusted using Census Population Department undercount estimates. NH White and NH Black registration and turnout counts estimated by NDC. Citizen Voting Age Pop., Age, Immigration, and other demographics from the 2015-2019 American Community Survey and Special Tabulation 5-year data.							